

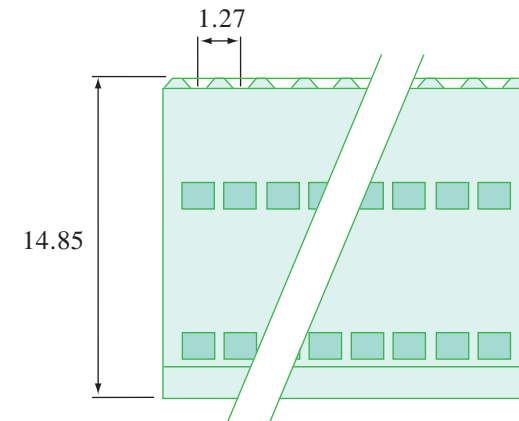
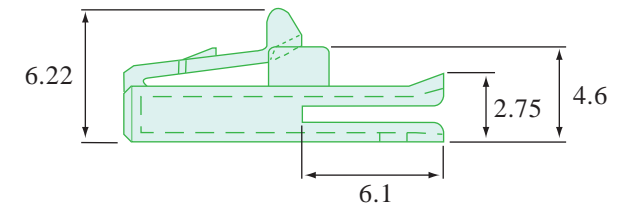
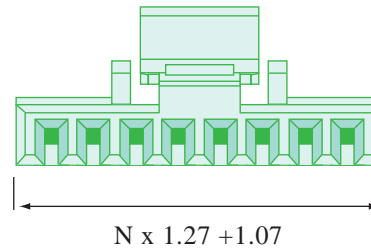
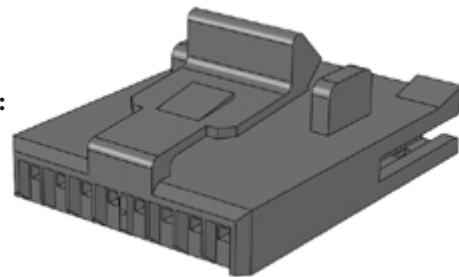
## Technical Characteristics

**Material** : Thermoplastic with Glass Fibre  
**Classified** : UL94VO  
**Colour** : Black as Standard  
 : Other Colours Available Upon Request  
**Number of Ways** : 6-30 Ways  
**Pitch** : 1.27mm

**RoHS Compliant, Lead Free** :



**3D Image** :



 **MEMCON Limited**  
 Compass House Vision Park Chivers Way HISTON Cambridge CB24 9AD  
 United Kingdom T +44 1223 257724 F +44 1223 257800  
[www.memcon.eu](http://www.memcon.eu) [sales@memcon.eu](mailto:sales@memcon.eu)

General Tolerance :  $\pm 0.02$  Unit : mm

<b>PART NO:</b> <b>MH545-XX</b>	<b>DRAWING NO:</b>	<b>REV</b>	<b>DATE</b>	<b>DRAWN</b>	<b>CHECKED</b>	<b>APPROVED</b>	<b>CUSTOMER IF APPLICABLE</b>	
		<b>B</b>	04/04/12	ER	AB	PC		
<b>DESCRIPTION:</b> <b>1.27mm Housings</b>	This document and drawings contains proprietary information which are the property of the Company and shall not be employed, copied, reprinted or disclosed to a third party in any manner, either wholly or in part, without the prior written consent of the Company						<b>DO NOT SCALE DRAWING DIMENSIONS MM</b>	