

# TAPE & REEL METAL DOMES

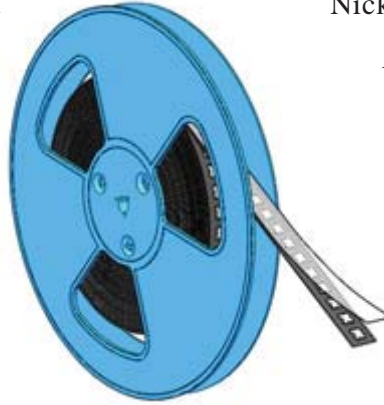
8.4mm, 10mm, 12.2mm & 16mm Standard  
Others Available upon Request

Stable Forces per Batch Number  
Excellent Tactile Effect

100% Traceability per  
Batch Number

High Quality

Available With or Without Dimple



Nickel or Gold Plating Options Available

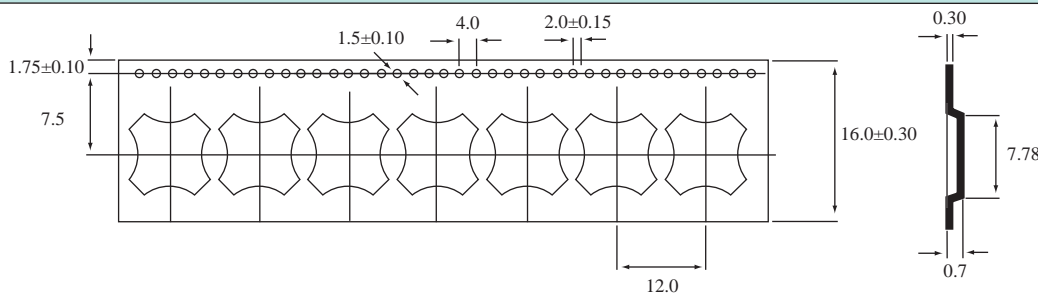
Used in a multitude of Industries,  
such as: Membrane Switch,  
Automotive,  
Consumer Electronics,  
Medical, Appliances, etc

RoHS  
Compliant



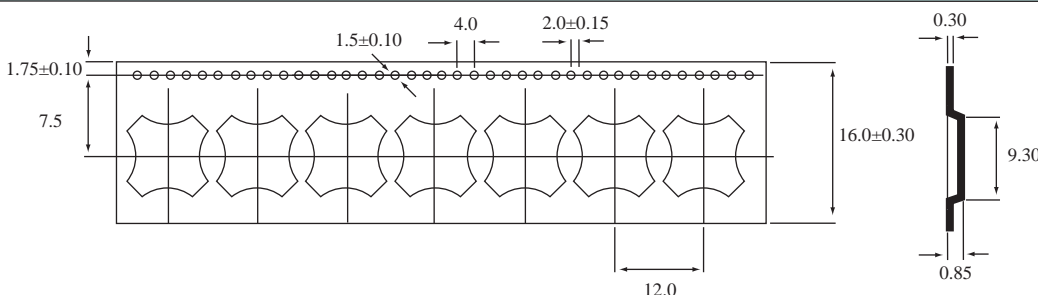
Contact Configuration	SPST, Normally Open	Contact Resistance with Gold or Silver Plating	<100 ohms <1 ohm
Contact Bounce (on)	<0.3ms	Voltage/Current Maximum	12mA @ 24 Volts DC, RL
Contact Bounce (off)	<6ms	Breakdown Voltage	Over 200 Volts
Operating Temperature	-55°C to 125°C	Material	Stainless Steel Type 304
Storage Temperature	-55°C to 125°C	Life Expectancy	1 Million
Humidity	0-97% (no condensation)		

## MDT 8.4-4-LEG-XXX



Forces: 280g, 320g, 350g,  
400g & 450g  
Reel Quantity: 5,000 Pcs  
Reel Diameter 330mm (13")  
With or Without Dimple  
Reverse/upside down  
available

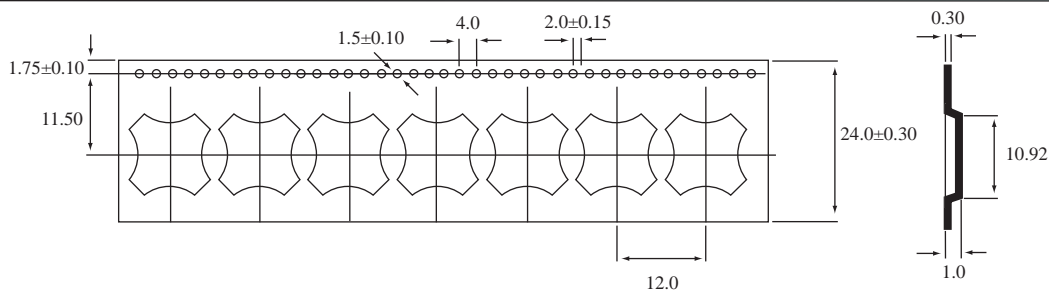
## MDT10-4-LEG-XXX



Forces: 200g, 280g, 320g,  
350g, 400g & 450g  
Reel Quantity: 5,000 Pcs  
Reel Diameter 330mm (13")  
With or Without Dimple  
Reverse/upside down  
available

# TAPE & REEL METAL DOMES

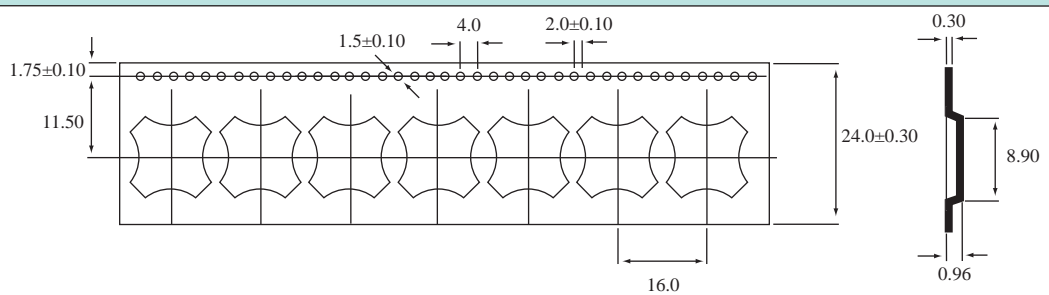
## MDT12.2-4-LEG-XXX



Forces: 150g, 200g, 240g,  
280g, 350g, 400g  
& 450g

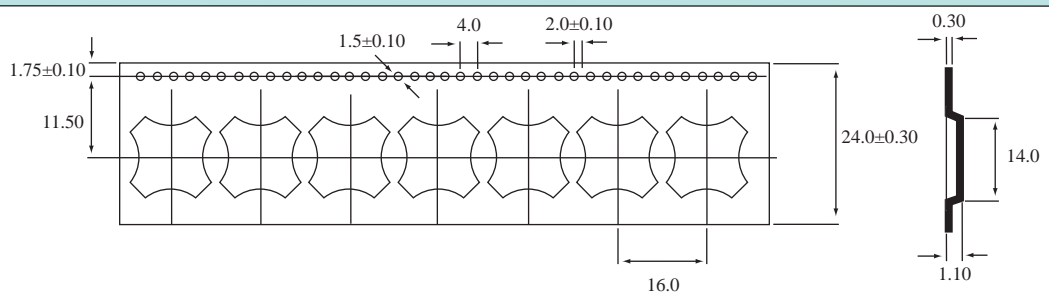
Reel Quantity: 4,000 Pcs  
Reel Diameter 330mm (13")  
With or Without Dimple  
Reverse/upside down  
available

## MDT14-4-LEG-XXX



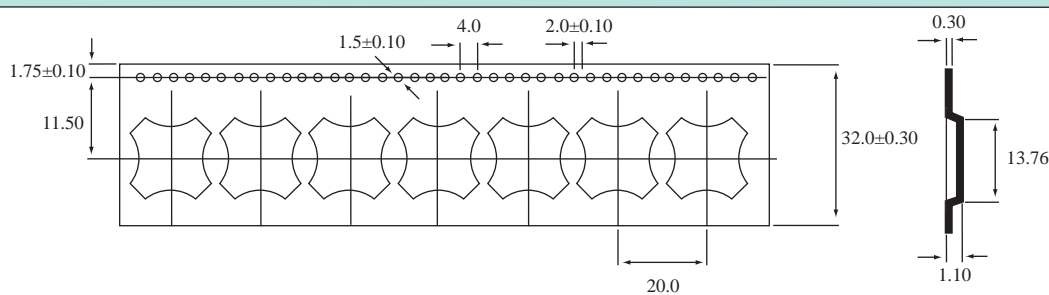
Forces: 280g, 350g & 400g  
Reel Quantity: 4000 Pcs  
Reel Diameter 330mm (13")  
With or Without Dimple  
Reverse/upside down  
available

## MDT16-4-LEG-XXX



Forces: 280g, 350g & 450g  
Reel Quantity: 3000 Pcs  
Reel Diameter 330mm (13")  
With or Without Dimple  
Reverse/upside down  
available

## MDT20-4-LEG-XXX



Forces: 280g, 350g & 450g  
Reel Quantity 2500 Pcs  
Reel Diameter 330mm (13")  
With or Without Dimple  
Reverse/upside down  
available

**MEMCON (Asia) Limited**  
Units 5/6 6/F Westley Square  
48 Hoi Yuen Rd Kwun Tong Hong Kong  
T +852 3741 1411 F +852 3747 8980  
www.memcon.asia sales@memcon.asia

**MEMCON Limited**  
Compass House Vision Park Chivers Way HISTON  
Cambridge CB24 9AD United Kingdom  
T +44 1223 257724 F +44 1223 257800  
www.memcon.eu sales@memcon.eu

MEMCON® is a registered trade mark of Memcon Limited

**MEMCON North America**  
6000 Red Arrow Hwy Unit I  
Stevensville Michigan 49127 USA  
T +1 269 281 0478 F +1 269 593 5952  
www.memcon.net sales@memcon.net