

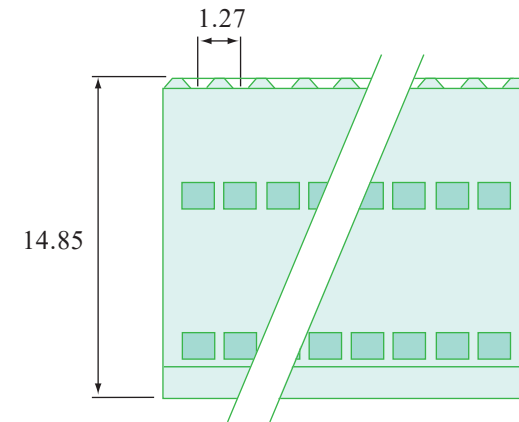
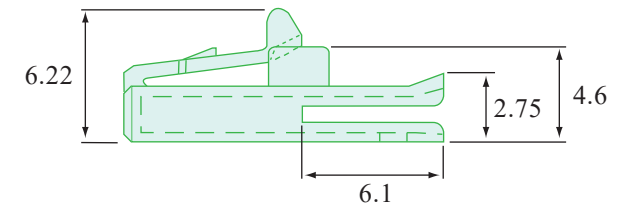
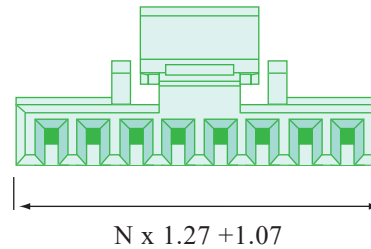
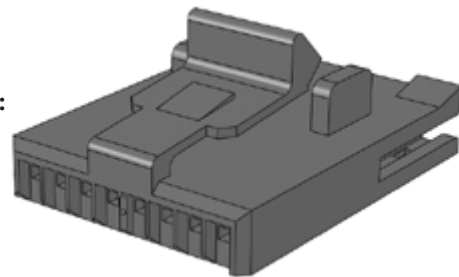
Technical Characteristics

Material : Thermoplastic with Glass Fibre
Classified : UL94VO
Colour : Black as Standard
 : Other Colours Available Upon Request
Number of Ways : 4-30 Ways
Pitch : 1.27mm

RoHS Compliant, Lead Free :



3D Image :




 Compass House Vision Park Chivers Way HISTON Cambridge CB24 9AD
 United Kingdom T +44 1223 257724 F +44 1223 257800
www.memcon.eu sales@memcon.eu

General Tolerance : ± 0.02 Unit : mm

| | | | | | | | |
|--|--|-----|----------|-------|---------|----------|---|
| PART NO: MH545-XX | DRAWING NO: | REV | DATE | DRAWN | CHECKED | APPROVED | CUSTOMER IF APPLICABLE |
| | | C | 04/04/12 | ER | AB | PC | |
| DESCRIPTION: 1.27mm Housings | This document and drawings contains proprietary information which are the property of the Company and shall not be employed, copied, reprinted or disclosed to a third party in any manner, either wholly or in part, without the prior written consent of the Company | | | | | | DO NOT SCALE DRAWING DIMENSIONS MM |