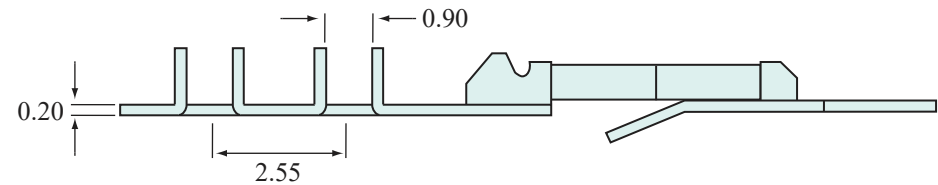
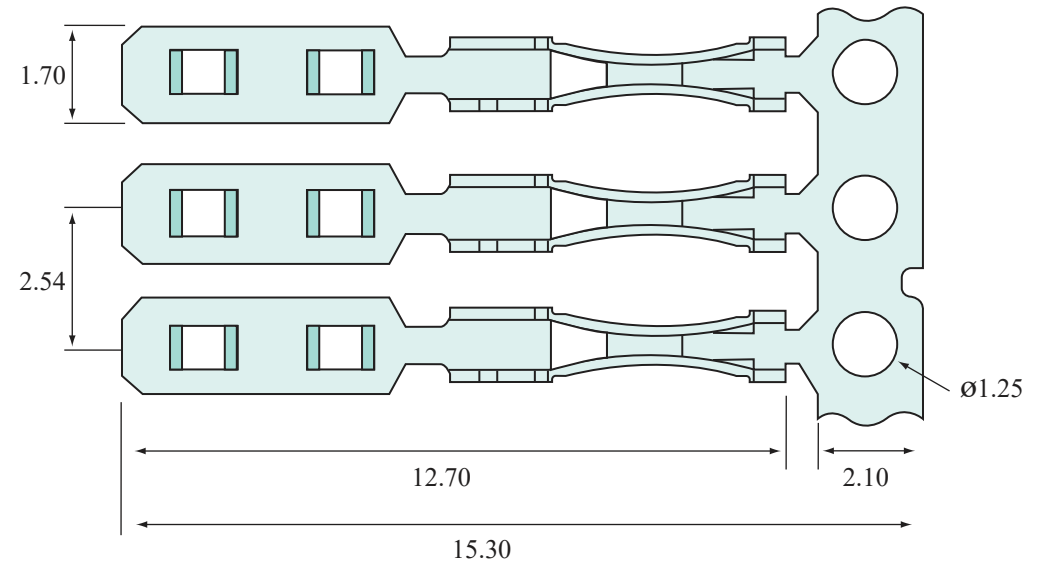


Technical Characteristics

- Material** : Phosphor Bronze
- Contact Resistance** : 5 mΩ Max
- Insulation Resistance** : 5.10⁵ MΩ at 500V
- Withstanding Voltage** : 1100V
- Contact Direct Current Rating** : 3A DC
- Contact Alternating Current Rating** : 5A AC
- Operating Temperature** : -55°C to +150°C
- Capacitance between Two Contacts** : 4pF Max



MEMCON Limited
 Unit 8 Campus Five Third Avenue Letchworth Hertfordshire SG6 2JF
 United Kingdom T +44 (0)1462 371477 F +44 (0)1462 677499
 www.memcon.eu sales@memcon.eu

General Tolerance : +/- 0.20 Unit : mm

PART NO:
MHFC025-XXX

DRAWING NO:	REV	DATE	DRAWN	CHECKED	APPROVED	CUSTOMER IF APPLICABLE
	D	24/03/14	ER	AB	PC	

DESCRIPTION:
High Insertion Force Female Contact

This document and drawings contains proprietary information which are the property of the Company and shall not be employed, copied, reprinted or disclosed to a third party in any manner, either wholly or in part, without the prior written consent of the Company

DO NOT SCALE DRAWING DIMENSIONS MM

Mechanical Characteristics

Plating Options

- Tin (T)** : 2.5 μ Tin over 1.25 μ Nickel
- Selective Gold (SG)** : 0.15 μ Gold over 1.25 μ Nickel
- Others Available Upon Request**

Crimp Strength to Flat Copper Cable

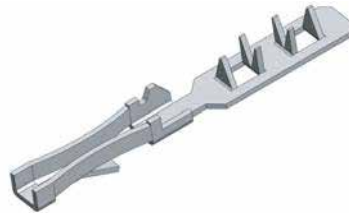
- Parallel to the Tracks** : 50N Min
- Perpendicular to the Tracks** : 15N Min

RoHS Compliant, Lead Free



3D Image

:



MEMCON Limited
 Unit 8 Campus Five Third Avenue Letchworth Hertfordshire SG6 2JF
 United Kingdom T +44 (0)1462 371477 F +44 (0)1462 677499
www.memcon.eu sales@memcon.eu

General Tolerance : +/- 0.20 Unit : mm

PART NO:
MHFC025-XXX

DRAWING NO:	REV	DATE	DRAWN	CHECKED	APPROVED	CUSTOMER IF APPLICABLE
	D	24/03/14	ER	AB	PC	

DESCRIPTION:
High Insertion Force Female Contact

This document and drawings contains proprietary information which are the property of the Company and shall not be employed, copied, reprinted or disclosed to a third party in any manner, either wholly or in part, without the prior written consent of the Company

DO NOT SCALE DRAWING DIMENSIONS MM