

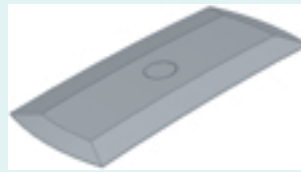
# Metal Domes for Membrane Switches and Flexible Circuits

## 4 Leg



Wide Range of Sizes  
6, 8.4, 10, 12.2, 16 & 20mm Available  
150, 170, 200, 280, 320, 350, 400 & 450 gr Options  
With or Without Dimple  
Stainless Steel

## Oblong



Wide Range of Sizes  
18, 25, 38 & 51mm Available  
280, 350 & 400 gr Options  
With or Without Dimple  
Stainless Steel

## Round



Wide Range of Sizes  
3, 4, 5, 5.6, 6, 6.9, 8.8, 10.8, 12.7 & 16mm Available  
180, 200, 240, 280 & 350 gr Options  
Stainless Steel

## Round with Dimple



Wide Range of Sizes  
4, 8, 9, 10, 12 & 12.7mm Available  
180, 240, 280, 350 & 400 gr Options  
With Large Dimple  
Stainless Steel

## Round with Dimple & Feet



Wide Range of Sizes  
6, 7, 8, 9, 10, 12, 12.7 & 13mm Available  
150, 200, 240, 280, 350, 400, 480 & 750 gr Options  
With Dimple & Feet  
Stainless Steel

## Triangle with Dimple & Feet



Wide Range of Sizes  
5, 6, 7, 8, 9, 10 & 12mm Available  
150, 160, 180, 200, 230, 280, 350, 400, 450 & 480 gr Options  
With Dimple & Feet  
Stainless Steel

**Other styles of Domes & Dome Arrays also available**  
**For Samples, Data or Quotation, please contact us**