

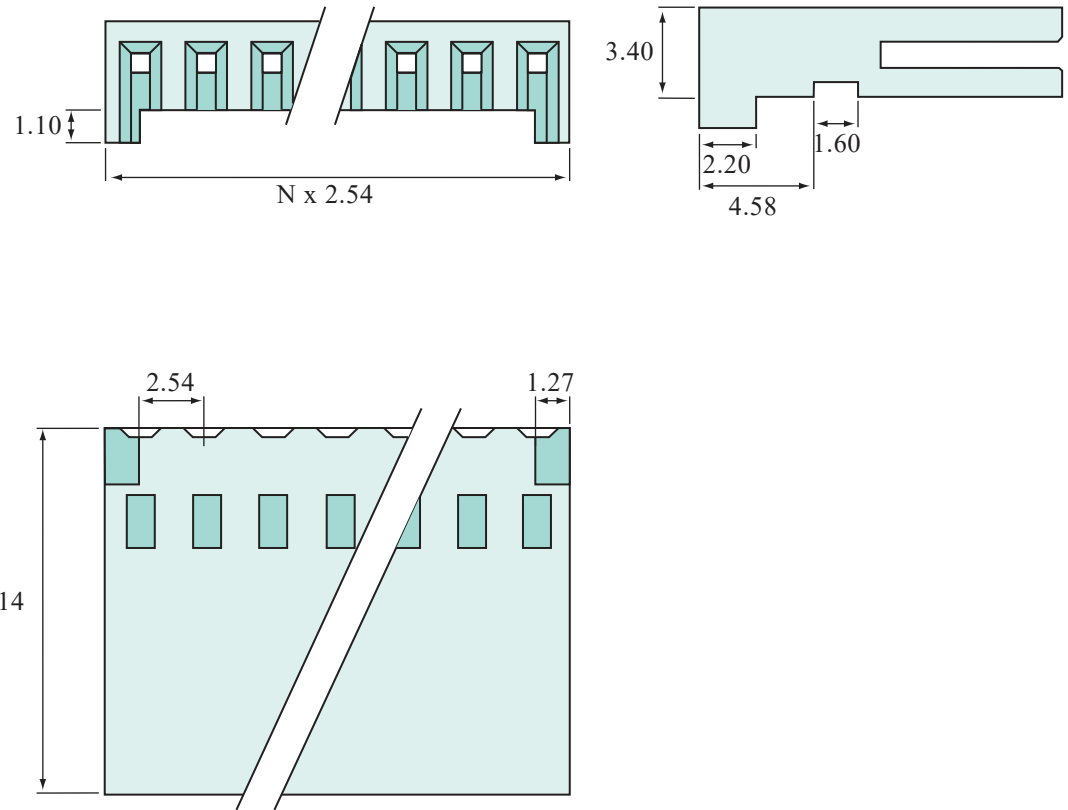
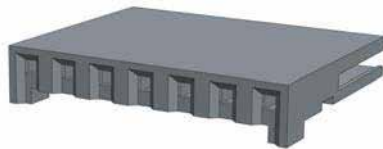
Technical Characteristics

Material : Thermoplastic with Glass Fibre
Classified : UL94VO
Colour : Black as Standard
 : Other Colours Available Upon Request
Number of Ways : 2-25 Ways
Pitch : 2.54mm

RoHS Compliant, Lead Free :



3D Image :




 Unit 8 Campus Five Third Avenue Letchworth Hertfordshire SG6 2JF
 United Kingdom T +44 (0)1462 371477 F +44 (0)1462 677499
www.memcon.eu sales@memcon.eu

General Tolerance : +/- 0.20 Unit : mm

PART NO: MHE-XX	DRAWING NO:	REV	DATE	DRAWN	CHECKED	APPROVED	CUSTOMER IF APPLICABLE
		C	04/01/08	ER	AB	PC	
DESCRIPTION: Polarized & Locking Housings	This document and drawings contains proprietary information which are the property of the Company and shall not be employed, copied, reprinted or disclosed to a third party in any manner, either wholly or in part, without the prior written consent of the Company						DO NOT SCALE DRAWING DIMENSIONS MM