

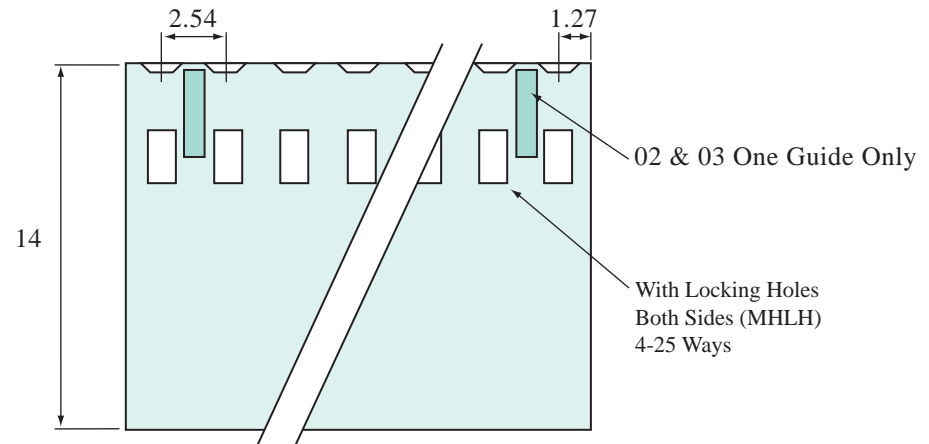
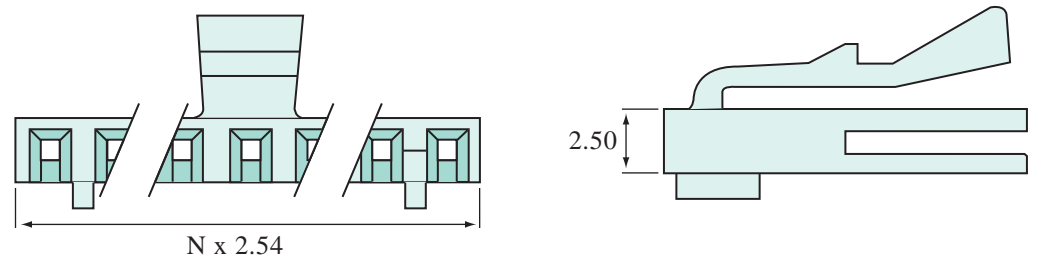
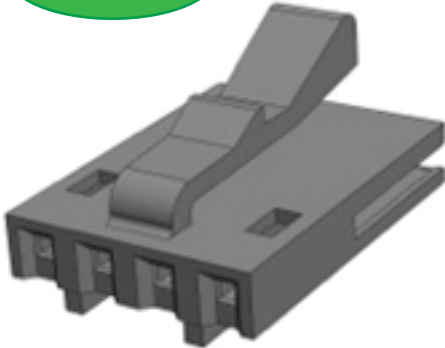
Technical Characteristics

Material : Thermoplastic with Glass Fibre
Classified : UL94VO
Colour : Black as Standard
 : Other Colours Available Upon Request
Number of Ways : 2-35 Ways
Pitch : 2.54mm

RoHS Compliant, Lead Free :



3D Image :



 **MEMCON Limited**
 Compass House Vision Park Chivers Way HISTON Cambridge CB24 9AD
 United Kingdom T +44 1223 257724 F +44 1223 257800
 www.memcon.eu sales@memcon.eu

General Tolerance : ± 0.02 Unit : mm

PART NO: MHLH-XX	DRAWING NO:	REV	DATE	DRAWN	CHECKED	APPROVED	CUSTOMER IF APPLICABLE
		A	02/01/13	ER	AB	PC	
DESCRIPTION: Polarized & Locking Housings with Holes	This document and drawings contains proprietary information which are the property of the Company and shall not be employed, copied, reprinted or disclosed to a third party in any manner, either wholly or in part, without the prior written consent of the Company						DO NOT SCALE DRAWING DIMENSIONS MM